



Course Catalog

Construction & General Industry

Welcome to the 360 Immersive Course Catalog, where safety compliance meets innovation. Our courses, aligned with the OSHA 10-hour curriculum for Construction and General Industry, are designed to meet industry standards while catering to diverse learning styles.

What sets us apart? A powerful combination of online eLearning, interactive simulations, and gamified experiences that mirror real workplace challenges. These immersive tools drive behavioral change and enhance learning outcomes.

Explore the catalog to discover engaging safety training topics designed to educate, inspire, and empower today's workforce.



Course Listing

Bloodborne Pathogens Part 1	Page 4
Bloodborne Pathogens Part 2	Page 4
Bloodborne Pathogens Part 3	Page 4
Bloodborne Pathogens Part 4	Page 5
Caught-In and Caught-Between Awareness	Page 5
Confined Space and PRCS Part 1	Page 5
Confined Space and PRCS Part 2	Page 5
Confined Space and PRCS Part 3	Page 6
Earthmoving Equipment	Page 6
Electrical Equipment Inspection	Page 7
Electrical GFCI and AEGCP Awareness	Page 7
Electrical Hazards - Part 1	Page 7
Electrical Hazards - Part 2	Page 7
Electrocution Awareness	Page 8
Emergency Action Plan	Page 8
Emergency Planning - Exits and Egress	Page 8
Fall Protection Systems - Awareness	Page 9
Fire Extinguisher Inspection	Page 9
Fire Extinguisher Use	Page 9
Fire Prevention	Page 9
Fire Protection	Page 11
Forklift General Safety	Page 11
Forklift - Key Off Inspection	Page 11
Forklift - Key On Inspection	Page 11
Forklift Operator Awareness Part 1	Page 12
Forklift Operator Awareness Part 2	Page 12
Hazard Communication	Page 12
Hearing Conservation	Page 12

Course Listing

Ladder Inspection	Page 13
Ladder Use	Page 13
Lockout-Tagout (LOTO)	Page 13
Machine Guarding	Page 13
Personal Fall Arrest System - Donning	Page 14
Personal Fall Arrest System - Inspection	Page 14
PPE - Awareness	Page 14
PPE - Body, Hands, Feet	Page 15
PPE - Eyes, Face, Head	Page 15
PPE - Hazardous Environments	Page 15
PPE - Respiratory Protection	Page 15
Safety Overview - Construction	Page 16
Safety Overview - General Industry	Page 16
Scaffolding Awareness	Page 16
Slips, Trips, and Falls	Page 17
Struck-By Awareness	Page 17
Trenching Awareness	Page 17
Welding and Hot Work Part 1 Construction	Page 18
Welding and Hot Work Part 2 Construction	Page 18
Welding and Hot Work Part 1 General Industry	Page 18
Welding and Hot Work Part 2 General Industry	Page 18



Bloodborne Pathogens Part 1

Course Includes: eLearning, Graded Quiz

Part 1 “What is a Bloodborne Pathogen?” introduces the nature of Bloodborne Pathogens (BBP), their types (e.g., HIV, Hepatitis B/C), and environments where they are found. It covers BBP transmission methods, emphasizing risks in workplaces involving blood or bodily fluids, and explains the importance of an Exposure Control Plan to prevent transmission. Learners gain foundational knowledge to understand BBP risks and safety measures.

Seat Time 0:10 OSHA Standard: 1910.1030, and industry best practices

Bloodborne Pathogens Part 2

Course Includes: eLearning, Graded Quiz

Part 2 “Prevent the Spread?” introduces the nature of Bloodborne Pathogens (BBP), their types (e.g., HIV, Hepatitis B/C), and environments where they are found. It covers BBP transmission methods, emphasizing risks in workplaces involving blood or bodily fluids, and explains the importance of an Exposure Control Plan to prevent transmission. Learners gain foundational knowledge to understand BBP risks and safety measures.

Seat Time 0:07 OSHA Standard: 1910.1030, and industry best practices

Bloodborne Pathogens Part 3

Course Includes: eLearning, Graded Quiz

Part 3 “Exposure Response” introduces BBP actions such as cleaning, reporting, and medical evaluation, and highlights the importance of Hepatitis B vaccination. It explains proper reporting procedures and employees’ rights to medical treatment following exposure. Part 3 focuses on managing BBP exposure effectively, ensuring prompt response, and emphasizing preventive measures to protect employee health.

Seat Time 0:05 OSHA Standard: 1910.1030, and industry best practices

Bloodborne Pathogens Part 4

Course Includes: eLearning, Graded Quiz

Part 4 "Universal Precautions" emphasizes workplace safety by promoting proactive measures to prevent BBP exposure. It covers best practices for handling BBP incidents, understanding BBP types like HIV and hepatitis, and avoiding contact with bodily fluids. The training fosters a safety-first culture, equipping employees with the knowledge to protect themselves and others from potential risks.

Seat Time 0:08 OSHA Standard: 1910.1030, 1926.1030, and industry best practices

Caught-In and Caught-Between Awareness

Course Includes: eLearning, Graded Quiz, Immersive Simulation

This course defines common jobsite hazards, including unguarded machinery, trenching risks, and heavy machinery dangers. Through an interactive construction site simulation, workers identify and mitigate caught-in and caught-between hazards. Emphasizing safety awareness, accountability, and proactive practices, the training equips participants to prevent accidents and adopt safe work methods in high-risk environments.

Seat Time 0:15 OSHA Standard: 1926.300, .416, .417, .650, & Subparts N, O, P, and industry best practices

Confined Space and PRCS Part 1

Course Includes: eLearning, Graded Quiz, Immersive Simulation

Part 1 "Awareness" introduces confined spaces and PRCS, emphasizing roles, responsibilities, and safe work practices. Learners explore hazardous atmospheres, space configurations, and hazard responses. An interactive simulation lets participants act as entrants, conducting pre-entry checks, reviewing permits, identifying hazards, and practicing proper responses. By reducing human error, this training reinforces critical safety protocols to ensure safe operations in confined spaces.

Seat Time 0:12 OSHA Standard: 1926.1200, .1203, .1204 Subpart AA, and industry best practices

Confined Space and PRCS Part 2

Course Includes: eLearning, Graded Quiz, Immersive Simulation

Part 2 "The Types & Rescue Requirements" defines roles in confined space work, differentiates non-permit and permit-required confined spaces, and highlights the selection of proper PPE and retrieval devices. It explores rescue service options and emphasizes preparedness for emergencies. An interactive simulation lets learners act as attendants, conducting pre-entry checks, reviewing permits, assessing safety, and managing external rescues, enhancing communication and decision-making in confined space operations.

Seat Time 0:15 OSHA Standard: 1926.1203, .1204, .1206, .1208, .1209, Subpart AA, and industry best practices

[Course Listing](#) [Contact Us](#) | www.360immersive.com | 208.906.4869 | info@360immersive.com



Confined Space and PRCs Part 3

Course Includes: eLearning, Graded Quiz

Part 3 "The Permit" provides an in-depth understanding of PRCs entry permits, detailing their 15 sections, proper signage, roles and responsibilities, acceptable entry conditions, and permit cancellation procedures. It emphasizes the importance of permits for safe confined space entry, ensuring workers adhere to safety protocols, conduct thorough evaluations, and maintain compliance to protect themselves and others.

Seat Time 0:12

OSHA Standard: 1926.1203, .1204, .1206, .1208, .1209, Subpart AA, and industry best practices

Earthmoving Equipment

Course Includes: eLearning, Graded Quiz, Immersive Simulation

This course introduces various earthmoving equipment, highlights associated hazards, and emphasizes safety features, preventative maintenance, and proper usage. Learners explore equipment inspections, runaway vehicle controls, and the importance of operator training. Through an interactive simulation, participants navigate a virtual jobsite, identifying hazards and reinforcing safety protocols. This training bridges skill gaps, promoting safe and competent equipment operation in construction settings.

Seat Time 0:16

OSHA Standard: 1926.20, .21, .600 - .602, and industry best practices

[Course Listing](#)

Contact Us | www.360immersive.com | 208.906.4869 | info@360immersive.com

Electrical Equipment Inspection

Course Includes: eLearning, Graded Quiz, Immersive Simulation

This course provides foundational knowledge for inspecting portable electrical equipment, focusing on identifying cord and plug hazards, inspecting double-insulated tools, and understanding two-prong vs. three-prong plugs. Learners also learn to inspect extension cords for damage and proper grounding. Emphasizing routine visual inspections, the training equips individuals to prevent electrical hazards and ensure equipment safety in the workplace.

Seat Time 0:07 OSHA Standard: 1910.303, .305, .334, .335, Subpart S, and industry best practices

Electrical GFCI and AEGCP Awareness

Course Includes: eLearning, Graded Quiz, Immersive Simulation

This course introduces electrical safety in the workplace, focusing on Ground Fault Circuit Interrupters (GFCI) and the Assured Equipment Grounding Connector Program (AEGCP) to prevent electrical hazards. An interactive simulation allows learners to identify hazards in a virtual construction environment, reinforcing the importance of proper training, equipment grounding, and adherence to safety protocols to prevent electrical injuries.

Seat Time 0:15 OSHA Standard: 1926.400, .404, .416, and industry best practices

Electrical Hazards Part 1

Course Includes: eLearning, Graded Quiz, Immersive Simulation

Part 1 "Burns, Electrocution, and Shock" raises awareness of electrical hazards, focusing on burns, electrocution, and shocks using the acronym "BE SAFE." It explains electricity's dangers, injury types, and the importance of self-awareness around electrical equipment. An interactive virtual warehouse simulation allows learners to identify hazards, reinforcing proactive safety practices to reduce risks and prevent electrical injuries in the workplace.

Seat Time 0:15 OSHA Standard: 1926.20, .21, .416, .417, Subpart K, and industry best practices

Electrical Hazards Part 2

Course Includes: eLearning, Graded Quiz, Immersive Simulation

Part 2 "Arc Flash, Blast, Fire, and Explosion" builds on foundational knowledge to address advanced hazards: arc flash/blast, electrical fires, and explosions. Learners explore causes, prevention methods, and protective equipment. An interactive virtual simulation enables participants to identify and respond to hazards in realistic workplace scenarios, reinforcing proactive safety practices. This training equips workers to mitigate risks and enhance workplace safety.

Seat Time 0:15 OSHA Standard: 1926.403, .407, .416 Subpart K, and industry best practices



Electrocution Awareness

Course Includes: eLearning, Graded Quiz, Immersive Simulation

This course trains workers to identify electrocution hazards, including overhead powerlines, damaged equipment, and cords. It explains the differences between electrical shock and electrocution, emphasizes safety controls like lockout/tagout, and highlights overhead power line safety. An interactive simulation allows learners to explore a virtual jobsite, identify hazards, and apply proactive safety measures. This training promotes self-awareness and accountability to prevent electrical incidents on construction sites.

Seat Time 0:17 OSHA Standard: 1926.21, .404, .416, .417, .1408, Subpart K, and industry best practices

Emergency Action Plan

Course Includes: eLearning, Graded Quiz, Immersive Simulation

This course introduces workplace emergency situations and hazards, emphasizing the importance of a documented Emergency Action Plan (EAP). Learners explore EAP expectations, procedures, and safety requirements. An interactive simulation places participants in a virtual construction environment to apply EAP knowledge by responding to emergency scenarios. This training fosters confidence and equips employees with practical skills to ensure safety and effective emergency responses in the workplace.

Seat Time 0:15 OSHA Standard: 1910.38, 1926.35, and industry best practices

Emergency Planning – Exits and Egress

Course Includes: eLearning, Graded Quiz, Immersive Simulation

This course emphasizes the importance of maintaining clear, obstruction-free emergency exit routes and understanding key components, signage, and markings for safe egress. Learners explore the critical role of exit route maintenance and proper emergency response. An interactive simulation places participants in a virtual fire emergency, allowing them to identify hazards, navigate exit routes, and follow evacuation plans, reinforcing practical skills for ensuring safety during crises.

Seat Time 0:12 OSHA Standard: 1910.35, - .37, Subpart E, and industry best practices

[Course Listing](#)

Contact Us | www.360immersive.com | 208.906.4869 | info@360immersive.com

Fall Protection Systems – Awareness

Course Includes: eLearning, Graded Quiz, Immersive Simulation

This course provides an overview of fall protection systems, including guardrails, safety nets, and personal fall arrest systems. It emphasizes protecting workers from falling objects, selecting proper equipment for tasks, and hazard awareness. Learners engage in an interactive simulation within a virtual construction environment, identifying hazards and missing safety systems. Perfect for onboarding and refresher training, the course reinforces safe practices to prevent fall-related incidents in high-risk settings.

Seat Time 0:15 OSHA Standard: 1910.28, .29, .140, Subpart D, 1926.501 – .503, and industry best practices

Fire Extinguisher Inspection

Course Includes: eLearning, Graded Quiz, Immersive Simulation

This course focuses on essential fire extinguisher inspections, covering procedures to ensure proper working condition. Learners are guided through regular component checks, including the pressure gauge, safety pin, hose, and nozzle, ensuring no visible damage. An interactive simulation provides step-by-step practice in inspecting a fire extinguisher, allowing trainees to apply their knowledge in a realistic setting, reinforcing fire safety procedures and workplace readiness

Seat Time 0:11 OSHA Standard: 1910.157, 1926.150, and industry best practices

Fire Extinguisher Use

Course Includes: eLearning, Graded Quiz, Immersive Simulation

This course teaches proper fire extinguisher use, including assessing fire severity, applying the P.A.S.S. method (Pull, Aim, Squeeze, Sweep), and deciding when to evacuate or call emergency services. Through interactive simulations, learners practice decision-making skills in various fire emergency scenarios, evaluating risks and responses. The training equips employees with practical knowledge to respond effectively and safely during workplace fire incidents.

Seat Time 0:10 OSHA Standard: 1910.38, .157, 1926.35, .150, and industry best practices

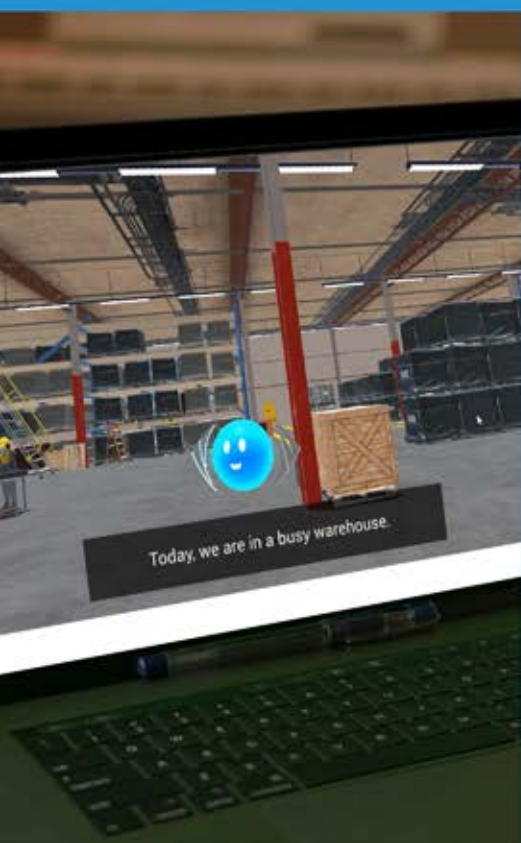
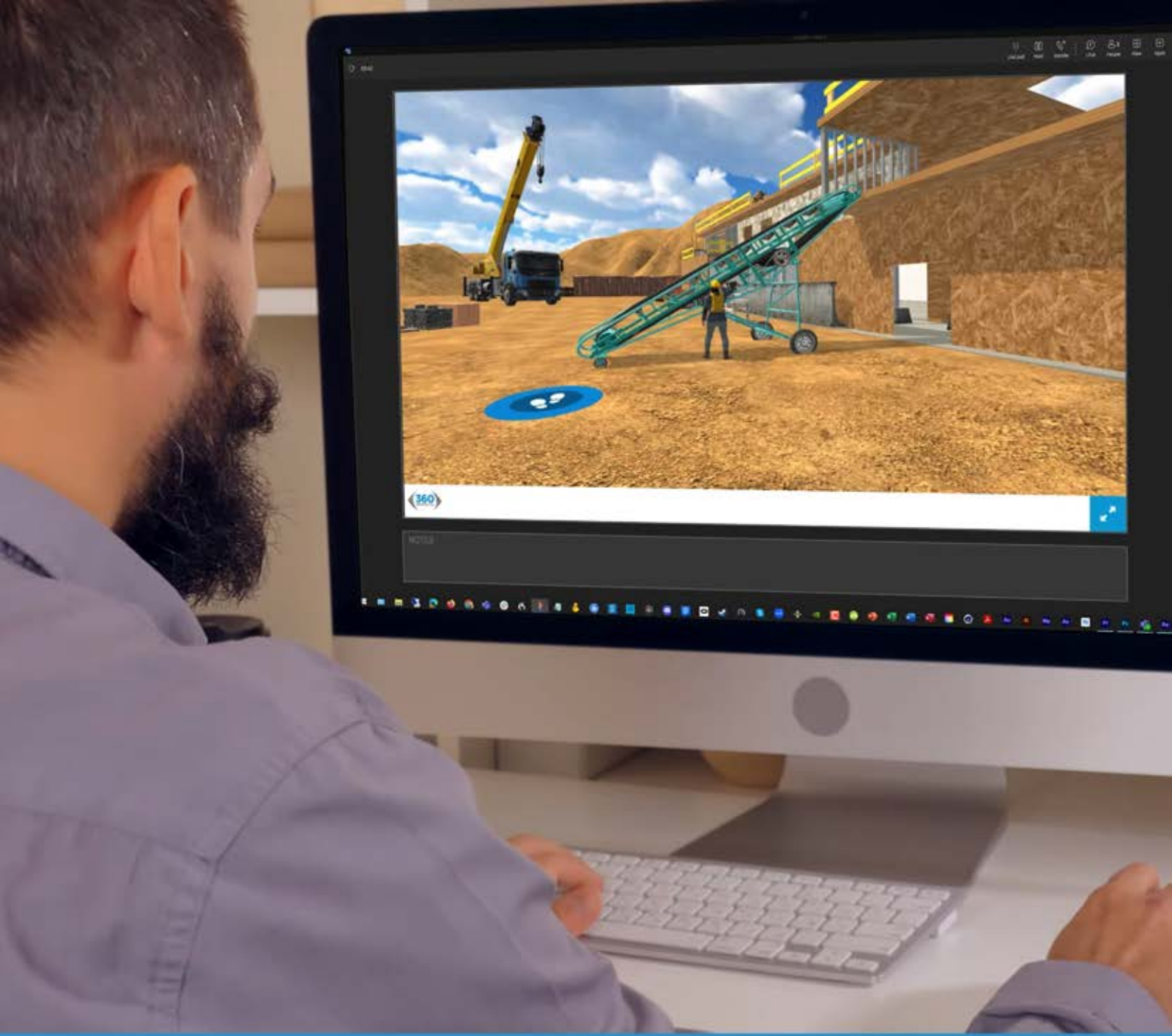
Fire Prevention

Course Includes: eLearning, Graded Quiz, Immersive Simulation

This course increases awareness of workplace fire prevention by covering fire prevention plans, identifying flammable and combustible chemicals, and recognizing ignition sources like electrical equipment and open flames. Through an interactive simulation, learners assess workplace scenes, identify hazards, and apply fire prevention strategies. The training empowers employees to proactively maintain a safe environment, enhancing their skills in hazard recognition and fire risk mitigation.

Seat Time 0:10 OSHA Standard: 1910.39, 1926.151, and industry best practices

[Course Listing](#) [Contact Us](#) | www.360immersive.com | 208.906.4869 | info@360immersive.com



Fire Protection

Course Includes: eLearning, Graded Quiz, Immersive Simulation

This course covers essential fire safety topics, including the fire triangle, types of fire extinguishers, inspection requirements, and the P.A.S.S. method (Pull, Aim, Squeeze, Sweep) for effective fire extinguisher use. An interactive simulation presents realistic fire scenarios where learners decide whether to fight fires or evacuate and practice extinguisher use. The training enhances hazard recognition, decision-making, and practical fire safety skills to promote workplace safety.

Seat Time 0:15 OSHA Standard: 1910.38, .39, .157, 1926.150, .151, and industry best practices

Forklift General Safety

Course Includes: eLearning, Graded Quiz

This course provides a comprehensive overview of forklift safety, including hazard recognition, safe operation practices, and pedestrian awareness. Topics cover tipping risks, load handling, parking procedures, and attended vs. unattended operations. By the end of this training, learners will be equipped with the knowledge needed to promote a safer workplace for both operators and pedestrians.

Seat Time 0:10 OSHA Standard: 1910.22, .176, .178, 1926.21(b)(2), .602(c), and industry best practices

Forklift – Key Off Inspection

Course Includes: eLearning, Graded Quiz, Immersive Simulation

This course teaches forklift operators to conduct essential pre-operation inspections, covering general checks like tires, lights, and gauges, along with specific requirements for electric, internal combustion, and propane forklifts. It emphasizes the importance and frequency of inspections, proper procedures when issues are found, and workplace safety protocols. Interactive elements, including simulations, reinforce the inspection process, ensuring forklifts are safe and functional before use to reduce workplace accidents.

Seat Time 0:12 OSHA Standard: 1910.22, .176, .178, and industry best practices

Forklift – Key On Inspection

Course Includes: eLearning, Graded Quiz, Immersive Simulation

This course emphasizes the importance of key-on inspections for forklift safety, covering inspection frequency and steps for removing unsafe equipment from service. Trainees learn to check lights, dashboard panels, safety devices, mast movement, and other components. An interactive simulation guides learners through a virtual inspection, teaching them to identify issues, report problems, and ensure equipment readiness, promoting a safer work environment and reducing the risk of equipment-related incidents.

Seat Time 0:12 OSHA Standard: 1910.22, .176, .178, and industry best practices

Forklift Operator Awareness Part 1

Course Includes: eLearning, Graded Quiz

This course provides foundational knowledge on forklifts, covering types, associated hazards like tip-overs and load instability, and control mechanisms such as steering, braking, and lifting. Trainees learn safe driving practices, driver awareness tips, and unique forklift features, including rear-wheel steering and swing awareness. By building a strong understanding of forklift operations and safety principles, this course prepares participants for advanced forklift training modules.

Seat Time 0:10

OSHA Standard: 1910.22, .176, .178, and industry best practices

Forklift Operator Awareness Part 2

Course Includes: eLearning, Graded Quiz

This advanced course builds on foundational knowledge, focusing on forklift center of gravity, driving on inclines, and proper stopping and parking procedures. It addresses tip-over hazards, their causes, and appropriate reactions, along with differentiating between safe working-away practices and leaving forklifts unattended. By mastering these safety practices, trainees enhance their ability to operate forklifts effectively while minimizing risks in advanced operational scenarios.

Seat Time 0:10

OSHA Standard: 1910.22, .176, .178, and industry best practices

Hazard Communication

Course Includes: eLearning, Graded Quiz, Immersive Simulation

This course educates learners on global safety standards for handling hazardous chemicals, covering Safety Data Sheets (SDS), hazard pictograms, signal words, precautionary statements, and container labeling requirements. An interactive simulation allows participants to analyze chemical labels, interpret SDS sections, and respond to a simulated chemical spill. The training enhances hazard communication skills, ensuring safe chemical handling practices and promoting workplace safety compliance.

Seat Time 0:20

OSHA Standard: 1910.1200, 1926.59, and industry best practices

Hearing Conservation

Course Includes: eLearning, Graded Quiz, Immersive Simulation

This course educates employees on protecting hearing in noisy environments, covering hearing loss risks, conservation programs, and earplug use. Learners explore the impact of noise, proper earplug insertion, and noise exposure assessments using sound meters. The interactive simulation allows participants to measure noise levels and make decisions about hearing protection. By the end, learners gain essential skills to preserve hearing health and promote a safer workplace.

Seat Time 0:15

OSHA Standard: 1910.95, 1910.132, 1926.52, .101, and industry best practices

[Course Listing](#)

Contact Us | www.360immersive.com | 208.906.4869 | info@360immersive.com

Ladder Inspection

Course Includes: eLearning, Graded Quiz, Immersive Simulation in EN, ES

This course ensures learners can safely and effectively choose and inspect various ladder types, and mitigate potential safety hazards. Learners identify types of portable ladders, their uses, and duty ratings while assessing weight capacities to select the appropriate ladder for tasks. Two simulations are included allowing learners to practice a step-by-step ladder inspection to identify hazards like cracks, missing parts, and damage, ensuring ladders meet safety standards and promoting workplace safety and hazard awareness.

Seat Time 0:15 OSHA Standard: 1910.22, 1910.23, 1926.20(b)(2), .1053, and industry best practices

Ladder Use

Course Includes: eLearning, Graded Quiz, Immersive Simulation in EN, ES

This course teaches workers how to select, setup, and use ladders in the workplace safely. Topics include choosing the right ladder for the task, proper placement for A-frame and extension ladders, essential safety practices like three points of contact, and recognizing hazards. An interactive simulation reinforces safe ladder practices by allowing learners to identify hazards and apply their knowledge in a virtual warehouse environment, minimizing ladder-related accidents and injuries.

Seat Time 0:15 OSHA Standard: 1910.23, 1926.1053, and industry best practices

Lockout-Tagout (LOTO)

Course Includes: eLearning, Graded Quiz, Immersive Simulation

The Lockout/Tagout (LOTO) course teaches the proper control of hazardous energy during maintenance and servicing. It covers roles in the LOTO program, safety devices like locks and tags, and step-by-step procedures for initiating and releasing from LOTO. Learners engage in an interactive simulation to identify energy sources and select the correct lockout devices, reinforcing safe procedures. The training emphasizes preventing accidents and ensuring workplace safety during maintenance activities.

Seat Time:15 OSHA Standard: 1910.147, 1926.417, and industry best practices

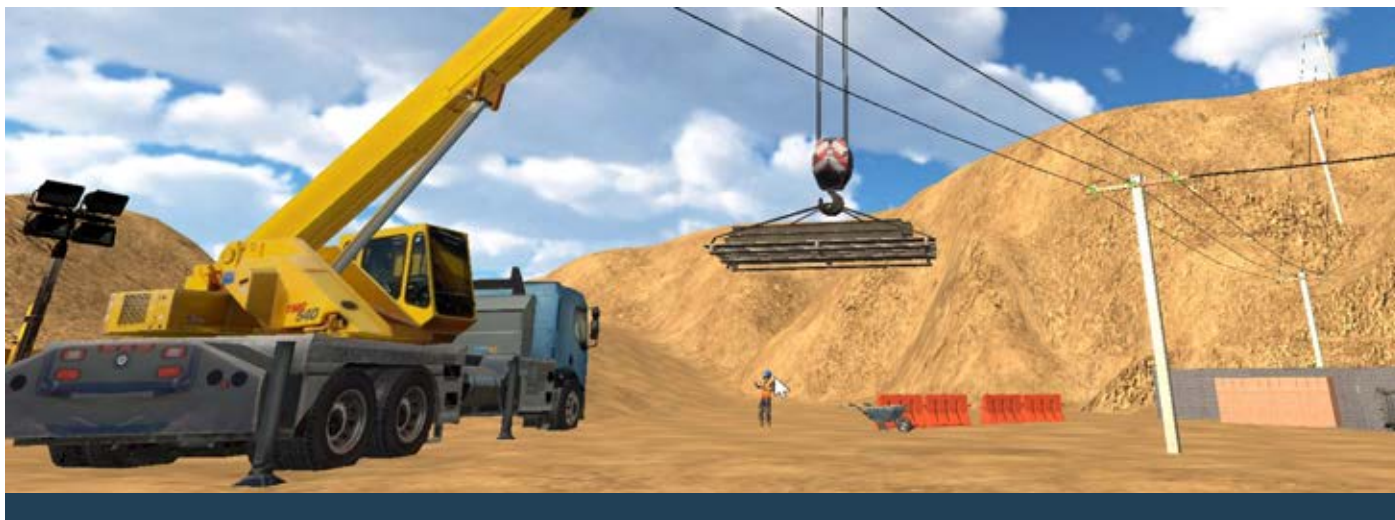
Machine Guarding

Course Includes: eLearning, Graded Quiz, Immersive Simulation

The Machine Guarding course covers identifying and mitigating machine hazards like belts, gears, and power tools. Learners explore safeguarding techniques such as guards, barriers, and interlocks while emphasizing personal protective equipment (PPE) and safe work practices. Through an interactive simulation, participants inspect machinery in a virtual workshop, identifying missing or inadequate guards and recommending corrective actions. This training equips workers with essential skills to recognize hazards and implement safety measures around machines.

Seat Time 0:17 OSHA Standard: 1910.212, 1910.219, 1926.300, .307, and industry best practices

[Course Listing](#) [Contact Us](#) | www.360immersive.com | 208.906.4869 | info@360immersive.com



Personal Fall Arrest System – Donning

Course Includes: eLearning, Graded Quiz, Immersive Simulation

This course teaches learners how to properly don, adjust, and secure a Personal Fall Arrest System (PFAS) to ensure effective fall protection. It emphasizes preventing suspension trauma and includes an interactive simulation where participants assist a coworker in correctly donning a harness. The interactive scenario reinforces proper tightening and securing techniques, promoting safety and fall protection awareness when working at heights.

Seat Time 0:12

OSHA Standard: 1926.104, .500-.503, and industry best practices

Personal Fall Arrest System – Inspection

Course Includes: eLearning, Graded Quiz, Immersive Simulation

This course covers types of PFAS, proper care, maintenance, and damage assessment to ensure worker safety at heights. Learners gain practical skills in inspecting PFAS harness components, identifying defects, and understanding the importance of avoiding damaged equipment. An interactive simulation reinforces inspection practices by guiding participants through hands-on defect identification, promoting thorough equipment checks and safe workplace practices.

Seat Time 0:16

OSHA Standard: 1926.20, .104, .502, .503, and industry best practices

PPE – Awareness

Course Includes: eLearning, Graded Quiz, Immersive Simulation

This course teaches the importance of Personal Protective Equipment (PPE) in workplace safety, covering the Hierarchy of Controls, PPE types (eye, face, head, hand, body, foot), respiratory and hearing protection, and proper PPE inspection and maintenance. An interactive simulation reinforces PPE evaluation and selection in a workshop environment. By course completion, learners will have the skills to identify, use, and maintain PPE effectively, ensuring a safer workplace.

Seat Time 0:14

OSHA Standard: 1910.95, .132, - .138, and industry best practices

[Course Listing](#)

Contact Us | www.360immersive.com | 208.906.4869 | info@360immersive.com

PPE – Body, Hands, Feet

Course Includes: eLearning, Graded Quiz, Immersive Simulation

This course focuses on selecting and using the correct personal protective equipment (PPE) for the body, hands, and feet to prevent workplace injuries. It covers body protection (coveralls, aprons), hand protection (gloves for specific hazards), and foot protection (safety shoes, boots). Additional modules address thermal/chemical burns, vibration hazards, and extreme temperatures. An interactive simulation reinforces PPE inspection skills, ensuring workers identify defects and choose appropriate PPE for job-specific risks.

Seat Time 0:15

OSHA Standard: 1910.120, .132, .136, .138, 1926.95, .96, .132, Subpart E, I, and industry best practices

PPE – Eyes, Face, Head

Course Includes: eLearning, Graded Quiz, Immersive Simulation

This course focuses on selecting and using the correct personal protective equipment (PPE) for eyes, face, and head. It covers eye protection types, impact ratings, face protection (shields, welding helmets), and hard hat classifications. Learners gain insights into selecting, inspecting, and using PPE effectively based on hazards. An interactive simulation highlights PPE's role in preventing injuries during equipment operations, reinforcing its importance in workplace safety.

Seat Time 0:15

OSHA Standard: 1910.133, .135, 1926.100, .102, Subpart E, I, and industry best practices

PPE – Hazardous Environments

Course Includes: eLearning, Graded Quiz, Immersive Simulation

This course trains employees to evaluate and protect themselves in hazardous chemical environments. It covers hazard assessments, selecting PPE for Protection Levels A-D, recognizing IDLH (Immediately Dangerous to Life and Health) environments, and routes of exposure (inhalation, ingestion, absorption, injection). Learners inspect chemical suits and identify common penetration points. An interactive simulation reinforces hazard evaluation and proper PPE selection, ensuring participants are well-prepared to handle chemical risks safely.

Seat Time 0:16

OSHA Standard: 1926.59, .65, .95, .103, and industry best practices

PPE – Respiratory Protection

Course Includes: eLearning, Graded Quiz, Immersive Simulation

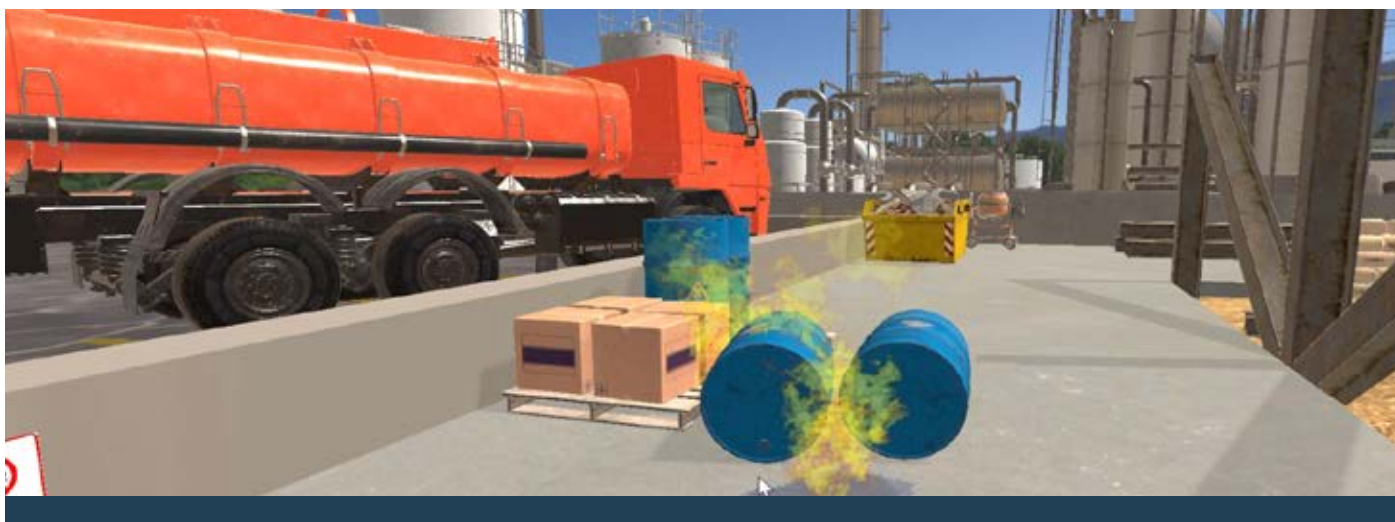
This course trains employees on the proper use, fit, and maintenance of respiratory protective equipment. It covers hazard identification, key components of a Respiratory Protection Program, medical fit testing, respirator types (filtering facepiece, half-face, full-face, PAPRs), and choosing the correct filters. An interactive simulation and a 360-degree video teach inspection techniques and defect identification, ensuring workers are equipped to manage airborne hazards effectively and safely.

Seat Time 0:15

OSHA Standard: 1910.134, 1926.103, and industry best practices

[Course Listing](#)

Contact Us | www.360immersive.com | 208.906.4869 | info@360immersive.com



Safety Overview – Construction

Course Includes: eLearning, Graded Quiz, Immersive Simulation in EN, ES

This course offers a comprehensive introduction to construction safety, covering hazard types, worker rights, and proactive safety measures. Learners gain skills in hazard identification and mitigation through an interactive simulation that replicates a construction jobsite, enhancing visual literacy and confidence. By promoting a culture of safety awareness, this training empowers workers to maintain safe and hazard-free environments.

Seat Time 0:24 OSHA Standard: 1926.20-.21(b)(2), .35, .52, .59, .95, .96, .100 - .103, .132, .150, .417, .602(c), .1000, .1030, .1053, .1203 - .1209, Subpart AA, C, D, E, and industry best practices

Safety Overview – General Industry

Course Includes: eLearning, Graded Quiz, Immersive Simulation

This course equips learners with a strong foundation in identifying and mitigating workplace hazards, including physical, chemical, biological, ergonomic, and psychosocial risks. It emphasizes strategies for creating a hazard-free environment and the roles of employers and employees in safety. Through an interactive simulation, participants navigate a virtual warehouse to identify common hazards, enhancing visual literacy and hazard recognition skills, ensuring safer workplaces and overall employee well-being.

Seat Time 0:22 OSHA Standard: 1910.22, .23, .38, .95, .120, .132 - .138, .146, .147, .157, .176, .178, .1030, .1200, Subpart I, J, and industry best practices

Scaffolding Awareness

Course Includes: eLearning, Graded Quiz, Immersive Simulation

This course provides essential knowledge about scaffolding hazards, fall prevention, and safety measures. Topics include causes of falls, the role of the competent person, identifying unsafe structures, managing personal safety risks, and controlling falling objects. It also covers electrical hazards and scaffold collapse risks. An interactive simulation allows learners to identify scaffolding hazards in a virtual construction site, helping them apply safety principles to prevent incidents and improve workplace safety.

Seat Time 0:15 OSHA Standard: 1926.95, .451, .454, .503, Subpart L, and industry best practices

[Course Listing](#)

Contact Us | www.360immersive.com | 208.906.4869 | info@360immersive.com



Slips, Trips, and Falls

Course Includes: eLearning, Graded Quiz, Immersive Simulation

This course teaches participants to identify and mitigate hazards on walking and working surfaces, such as slippery floors, uneven ground, and cluttered areas. Topics include hazard identification, preventing slip-and-fall incidents, and effective hazard signaling. An interactive simulation allows learners to navigate a virtual workplace to recognize risks and practice hazard communication, ensuring a safer work environment and reducing injuries related to poorly maintained surfaces.

Seat Time 0:15

OSHA Standard: 1910.22, .28, .141, .145, and industry best practices

Struck-By Awareness

Course Includes: eLearning, Graded Quiz, Immersive Simulation

This course increases awareness of struck-by hazards, including flying, falling, swinging, and rolling objects on the jobsite. It emphasizes situational awareness, self-awareness, and vigilance to mitigate risks associated with tools, equipment, and heavy machinery. An interactive simulation immerses learners in a virtual jobsite where they identify and categorize hazards, enhancing their hazard recognition and response skills to promote a safer workplace environment.

Seat Time 0:12

OSHA Standard: 1926.21, .100, .601, .602, .1417, .1425, Subparts C, E, M, N, O, and industry best practices

Trenching Awareness

Course Includes: eLearning, Graded Quiz, Immersive Simulation in EN, ES

This course provides foundational knowledge on trenching and excavation hazards, safety measures, and protective devices. Topics include soil collapse risks, hazard identification, hazard control methods (sloping, shoring, shielding), and safe entry/exit procedures. It emphasizes the role of the competent person in trench safety. An interactive simulation allows learners to inspect a trench for hazards, apply safety practices, and make informed decisions to prevent trench collapses, promoting a safer work environment.

Seat Time 0:14

OSHA Standard: 1926.650, .651, and industry best practices

[Course Listing](#)

Contact Us | www.360immersive.com | 208.906.4869 | info@360immersive.com

Welding and Hot Work Part 1 – Construction

Course Includes: eLearning, Graded Quiz

This course provides a comprehensive understanding of body hazards in welding, cutting, and grinding activities, including burns, sparks, and debris. Topics include hazard controls, gas and fume exposure management, electric shock prevention, and the importance of using PPE such as welding helmets and face shields. Participants will learn to identify and control risks, ensuring a safe work environment for welding and hot work operations.

Seat Time 0:12 OSHA Standard: 1926.28, .102, .350-.353, .417, Subpart J, and industry best practices

Welding and Hot Work Part 2 – Construction

Course Includes: eLearning, Graded Quiz, Immersive Simulation

This course provides a thorough understanding of body hazards in welding, cutting, and grinding operations. Topics include hazard controls, gas and fume exposure management, preventing electric shock, and the critical use of PPE like helmets, shields, and protective clothing. Participants will gain skills in hazard identification and control measures, ensuring safety during welding and hot work tasks.

Seat Time 0:16 OSHA Standard: 1910.132, .134, .147, .252-.254, Subpart Q, and industry best practices

Welding and Hot Work Part 1 – General Industry

Course Includes: eLearning, Graded Quiz

This course builds on foundational welding safety, focusing on gas cylinder safety, fire precautions, fire suppression equipment, and fire watch responsibilities. Participants learn about hot work permits, prohibited areas, and safety compliance. An interactive simulation allows learners to identify and mitigate hazardous welding operations on the jobsite, reinforcing practical skills for ensuring workplace safety during welding and hot work activities.

Seat Time 0:12 OSHA Standard: 1926.150, .350, .352, .354, Subpart J, and industry best practices

Welding and Hot Work Part 2 – General Industry

Course Includes: eLearning, Graded Quiz, Immersive Simulation

This course builds on Part 1, focusing on advanced welding hazards and safety practices, including gas cylinder handling, fire precautions, fire suppression equipment, and fire watch duties. Learners explore hot work permit requirements and engage in an interactive simulation to identify and address hazardous welding operations. Upon completion, participants will be equipped to mitigate risks and ensure safety in welding and hot work environments.

Seat Time 0:16 OSHA Standard: 1910.38, .146, .157, .252-.254, Subpart Q, and industry best practices



For More Information Contact:

Jennifer Lastra

jennifer@360immersive.com

208.906.4869

Additional Links

[MVST - Free Trial](#)

[MVST - Brochure](#)