

Course Catalog

Construction

The modules outlined in this catalog are conveniently developed to support blended learning styles. The learning objectives for each course follows the compliance-based OSHA 10 Construction safety training topics.

Each topic includes an eLearning lesson paired with an interactive simulation or animation experience. Look inside for more details and a comprehensive library of safety training topics specifically designed to educate, engage, entertain, and empower today's learners.



Construction - Course Listing

Caught-In or Between: General Awareness	Page 3
Confined Space: PRCS Awareness	Page 3
Confined Space: PRCS The Permit	Page 3
Confined Space: PRCS Types & Rescue Requirements	Page 3
Electrical: Burns, Electrocution, and Shock	Page 4
Electrical: Arc Flash/Blast, Fire and Explosion	Page 4
Electrical: GFCI & AEGCP	Page 4
Electrical: Electrocution Awareness	Page 4
Earthmoving Equipment Awareness	Page 5
Emergency Action Planning, Medical Services, & First Aid	Page 5
Fall Protection Awareness	Page 5
Fall Protection Donning	Page 5
Fall Protection Inspection	Page 6
Fire Extinguisher Inspection	Page 6
Fire Prevention Awareness	Page 6
Fire Protection Awareness	Page 6
Ladder Inspection	Page 7
Ladder Use	Page 7
Lockout/Tagout (LOTO)	Page 7
Machine Guarding	Page 7
Occupational Noise Hearing Conservation	Page 8
PPE Hazardous Environments	Page 8
PPE Respiratory Protection	Page 8
Scaffolding Awareness	Page 8
Struck By Hazard Awareness	Page 9
Welding and Hotwork Part #1	Page 9
Welding and Hotwork Part #2	Page 9
Trenching and Excavation Awareness	Page 9

Courses



Caught-in and between Awareness

Seat Time: 20 min

Who: All workers in construction.

Learning Objectives:

General Awareness defines the basic hazards associated with caught-in or caught-between conditions found on typical jobsites.

Additional topics include unguarded machinery, buried in or by, and pinned between hazards and their control methods. Learners will identify, prevent, and become more mindful of circumstances that could lead to possible injuries on the jobsite.

An interactive simulation is included to guide the learner through a virtual construction jobsite where they can observe workers completing dangerous tasks and identify various caught-in and caught-between hazards.

OSHA Standard: 1926.300, .416, .417, .650, & Subparts I, K, L, N, O, P, Q, W, T, Subpart R – Steel Erection, Subpart CC Cranes and Derricks & industry best practices



Confined Space PRCS General Awareness

Seat Time: 16 min

Who: All workers in construction.

Learning Objectives:

Confined Space and Permit Required Confined Space (PRCS) training explains the definitions, roles & responsibilities, and evaluation methods to ensure safe work practices on the jobsite.

Additional topics include understanding the conditions associated with hazardous atmospheres, different types of space configurations, and how to respond when hazards are detected during entry into a PRCS.

An interactive simulation is included where the learner is tasked with filling the role of the entrant preparing to enter a PRCS. The entrant must perform pre-entry checks, review the entry permit, assess whether or not it is safe to enter, evaluate, and respond to hazards.

OSHA Standard: 1926.1200, .1203, .1204 Subpart AA and industry best practices



Confined Space PRCS The Permit

Seat Time: 12 min

Who: All workers in construction.

Learning Objectives:

Permit Required Confined Space (PRCS) The Permit explains the general requirements and meaning of the 15 sections of the entry permit.

Additional topics include proper signage and posting requirements, understanding designated roles and responsibilities, acceptable entry conditions, and when to cancel an entry permit.

An interactive simulation is included where the learner plays the role of the supervisor. The supervisor's objective is to review the entry permit, communicate with the entry team, identify hazards and hazard controls, and assess whether or not it is safe to enter the space.

OSHA Standard: 1926.1200, .1204, Subpart AA and industry best practices



Confined Space PRCS Types & Rescue

Seat Time: 15 min

Who: All workers in construction.

Learning Objectives:

Permit Required Confined Space (PRCS) The Types and Rescue Requirements describe the roles and duties of the authorized entrant, attendant, and supervisor.

Additional topics include the two types of confined spaces, the use of appropriate PPE and retrieval devices based on the hazards of the space, and different entry rescue service options.

An interactive simulation is included where the learner plays the role of the attendant. The attendant's objective is to perform pre-entry checks, review the entry permit, communicate with the entrant, assess whether or not it is safe for the entrant to enter the space, evaluate and respond to hazards, approve or suspend the entry permit, and perform rescue from outside the PRCS.

OSHA Standard: 1926.1200, .1204, Subpart AA and industry best practices



Electrical: Burns, Electrocutation, and Shock

Seat Time: 25 min

Who: All workers in construction.

Learning Objectives:

BES is the first of a two-part series about electrical safety. BE SAFE Part 1 helps learners remember the different types of electrical hazards. “B” is for Burns, “E” is for Electrocutation, and “S” is for Shock.

This training module examines unsafe electrical hazards, how to prevent electrical burns, best work practices to prevent electrocutions, why electricity is so dangerous, and how to develop self-awareness around electricity.

An interactive experience is included where the learner must identify hazards that could cause electrical burns, electrocution, or shock injuries in a virtual warehouse environment.

OSHA Standard: 1926 Subpart K, Subpart V-Portable Ladder Use (WAC 296-876-400) & industry best practices



Electrical: Arc Flash/Blast, Fire and Explosion

Seat Time: 25 min

Who: All workers in construction.

Learning Objectives:

AFE is the second of a two-part series about electrical safety. BE SAFE Part 2 helps learners remember the different types of electrical hazards. “A” is for Arc Flash/Arc Blast, “F” is for Fire, and “E” is for Explosion.

This training module defines and explains how to stay safe from an arc flash and arc blast, the causes of electrical fires and how to prevent them, and what steps workers can take to prevent explosion hazards while on the job.

An interactive experience is included where the learner must identify hazards that could cause arc flash, electrical fires, or explosions in a virtual warehouse

OSHA Standard: 1926 Subpart K, Subpart V-Portable Ladder Use (WAC 296-876-400) & industry best practices



Electrical: GFCI & AEGCP

Seat Time: 20 min

Who: All workers in construction.

Learning Objectives:

Ground Fault Circuit Interrupters (GFCI) and the Assured Equipment Grounding Connector Program (AEGCP) are two options to protect workers from electrical injuries.

Topics introduced include understanding the importance of not working with electricity unless properly trained and instructed to do so by the employer.

An interactive simulation is included to help learners become aware of the many electrical hazards found throughout the jobsite in a virtual construction environment.

OSHA Standard: 1926.400, .404 and industry best practices



Electrical: Electrocutation Awareness

Seat Time: 20 min

Who: All workers in construction.

Learning Objectives:

Electrocution is part of the Fatal 4 training in the construction industry for all workers. This training helps the learner understand and identify potential electrical dangers while on a construction jobsite.

Learners will explore ways to stay safe and aware of electrocution hazards, the difference between shock and electrocution, and safety controls around electricity. Overhead powerline safety, damaged equipment, and cords are also discussed in detail.

An interactive experience is included where learners will explore a construction jobsite and identify various electrical hazards.

OSHA Standard: 1926.400- 449, 1926.1407, .1408, .1410, .1411, Subpart K, Subpart V-Portable Ladder Use (WAC 296-876-400) & industry best practices



Earthmoving Equipment Awareness

Seat Time: 15 min

Who: All workers in construction.

Learning Objectives:

Earthmoving Equipment explains the different types of equipment, common hazards, associated controls, and required safety features.

Additional topics include the importance of maintaining a preventative maintenance schedule, training on proper usage under various conditions, regular equipment inspections, and runaway vehicle controls.

An interactive simulation guides learners through a construction jobsite where they must identify common hazards related to different types of earthmoving equipment being operated.

OSHA Standard: 1926.602, 1910.178 and industry best practices



Emergency Action Plan, Medical & First Aid

Seat Time: 15 min

Who: All workers in construction.

Learning Objectives:

Emergency Action Plan (EAP) Medical and First Aid explains the different types of emergency situations and hazards that are reasonably expected on the jobsite.

Additional topics include the expectations, requirements, and procedures that make up the documented EAP to ensure the safety of employees if a potential emergency occurs.

An interactive simulation prepares learners on how to respond to various common emergencies found on the jobsite by applying their knowledge of common EAP procedures.

OSHA Standard: 1926.52, .101 & industry best practices



Fall Protection Systems Awareness

Seat Time: 15 min

Who: All workers in construction.

Learning Objectives:

Fall Protection Systems awareness training illustrates the different types of systems, under what conditions must a system be put in place, and how to be protected from objects that fall from above.

Additional topics include body belts, working positioning systems, and travel restraint systems. Learners will gain an awareness of their surroundings and understand which personal fall protection system best suits work being performed on a jobsite.

An interactive simulation allows the learner to explore a construction environment in a high-rise building and identify potential hazards and missing fall protection systems.

OSHA Standard: 1910.28, .140, Subpart D, 1926.106, Subpart M 1925.500, & industry best practices



Fall Protection Systems Donning the Harness

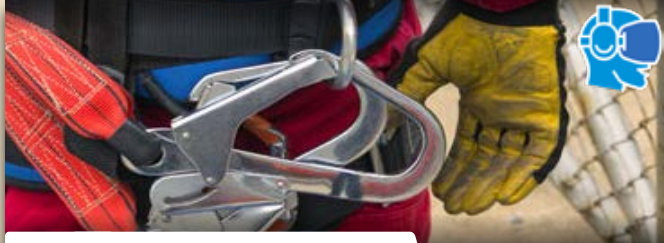
Seat Time: 20 min

Who: All workers in construction.

Learning Objectives:

Personal Fall Arrest System (PFAS) Donning training will help learners understand how to correctly don, tighten the straps, and align the PFAS. They will know how to properly check to verify the PFAS is secure, and learn how to avoid suspension trauma.

OSHA Standard: 1926.503 & industry best practices



Fall Protection Systems Inspecting the Harness

Seat Time: 20 min

Who: All workers in construction.

Learning Objectives:

Personal Fall Arrest System (PFAS) Inspection training is for all employees that are required to wear and maintain PFAS for work. Learners will understand the different types of PFAS, proper care, inspection, and what to do when there is damage to the PFAS.

An interactive simulation allows the learner to inspect the harness and lanyard. Select the defects that could lead to serious injury in a fall.

Sections of the harness can be clicked for a closer view.

OSHA Standard: 1926.502 & industry best practices



Fire Extinguisher Inspection

Seat Time: 15 min

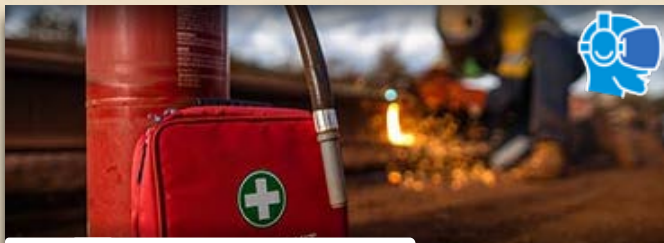
Who: All workers in construction.

Learning Objectives:

Fire Extinguisher Inspection covers step-by-step inspection methods, record keeping requirements, testing frequency, and proper storage.

An interactive simulation trains learners to thoroughly inspect each part of an extinguisher to ensure its safe and proper usage.

OSHA Standard: 1926.150 (c)(1)(viii) and best practices



Fire Prevention Awareness

Seat Time: 15 min

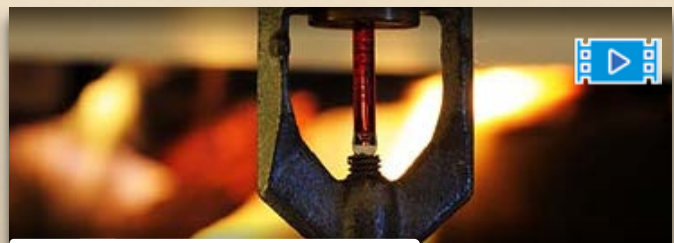
Who: All workers in construction.

Learning Objectives:

Fire Prevention Awareness explains the different components of the written fire prevention plan, how to identify flammable and combustible chemicals, and potential ignition sources.

An interactive simulation allows the learner to practice a scene assessment, interacting with pictograms, inspecting drum labels, and identifying potential ignition sources.

OSHA Standard: 1926.151 and industry best practices



Fire Protection Awareness

Seat Time: 20 min

Who: All workers in construction.

Learning Objectives:

Fire Protection Awareness explains the fire triangle and its components, different fire extinguishers, their uses, inspection requirements, and the steps to follow when using an extinguisher.

An interactive simulation prepares learners to determine when to evacuate or fight a fire based on its conditions, and how to properly use a fire extinguisher using the P.A.S.S. method.

OSHA Standard: 1926.150, 1926.151, 1926.24, 1926.352 and industry best practices



Ladder Inspection

Seat Time: 20 min

Who: All workers in construction.

Learning Objectives:

Ladder Inspection training focuses on the basics of ladder use and the different categories and types of ladders. The importance of inspections prior to use, and what to look for during an inspection are explained in detail. The training includes different types of portable ladders found on the jobsite.

An interactive simulation trains the learner to perform an inspection of an A-Frame ladder and identify potential safety hazards on various ladder components before use.

OSHA Standard: 1910.1053, .1060, 1926.1053(b)(15), & industry best practices



Ladder Use

Seat Time: 15 min

Who: All workers in construction.

Learning Objectives:

Ladder Use training focuses on identifying the proper ladder to use for the job, proper setup, and placement for A-Frame and extension ladders.

Additional topics covered include safety around electricity, climbing or descending ladders properly, and key personal safety tips when working on ladders.

An interactive simulation trains the learner to identify potential safety hazards related to ladder use and setup in a virtual warehouse environment.

OSHA Standard: 1926.1059 (in reserve), 1926.1053, Subpart X & industry best practices



Lockout/Tagout (LOTO)

Seat Time: 20 min

Who: All workers in construction.

Learning Objectives:

The Control of Hazardous Energy illustrates the three roles of the Lockout Tagout (LOTO) program, reviews different safety devices, and clearly outlines the correct LOTO and release from LOTO process steps.

An interactive simulation is included to help learners identify different energy sources and which lockout device to apply prior to maintenance.

OSHA Standard: 1926.416, .417, 1926.64, 1926.702, Subpart K & industry best practices



Machine Guarding

Seat Time: 20 min

Who: All workers in construction.

Learning Objectives:

This module explains the basic knowledge of machine guarding hazards found on construction sites. This includes hand tools, power tools, saws, point-of-operation hazards, in-running nip points, belts, shafts, pulleys, and gears.

Learners will discover how to identify these hazards and how to protect themselves from becoming an injury statistic.

An interactive simulation is included to guide learners through a virtual workshop environment allowing them to inspect various types of machinery searching for missing machine guards.

OSHA Standard: 1926.300 & industry best practices



Occupational Noise Hearing Conservation

Seat Time: 15 min

Who: All workers in construction.

Learning Objectives:

Hearing Conservation teaches about occupational noise, hearing loss, the importance of a Hearing Conservation Program, and how to properly insert foam earplugs.

Additional topics include the effects of hearing loss and ways to determine what level of hearing protection may be required based on the work environment.

An interactive simulation trains learners how to make decisions based on sound meter readings and assess the impact of noise exposure on the job.

OSHA Standard: 1926.52, .101 & industry best practices



PPE Hazardous Environments

Seat Time: 20 min

Who: All workers in construction.

Learning Objectives:

Personal Protective Equipment (PPE) Hazardous Environments illustrates how to evaluate the work environment and associated hazards, as well as how to identify and select the proper PPE to protect against hazardous chemical environments. The training identifies the correct PPE requirements for Protection Levels A, B, C, and D depending on the hazards, environment, and needs.

Additional topics include immediately dangerous to life and health environments, and the associated routes of potential exposure to hazardous materials.

An interactive simulation is included where the learner is tasked with responding to a dangerous chemical incident in an industrial environment.

OSHA Standard: 1926.65, 1910.120, Subpart H, and industry best practices



PPE Respiratory Protection

Seat Time: 14 min

Who: All workers in construction.

Learning Objectives:

Personal Protective Equipment (PPE) Respiratory Protection is for all employees that are required to wear and maintain respiratory protective equipment. This training covers the employer requirements to identify the hazards employees are exposed to, and how to protect against airborne hazards on the jobsite.

Additional topics include information about the Respiratory Protection Program, medical fit testing, inspection, and maintenance of various types of respirators commonly found on the jobsite.

OSHA Standard: 1926.55, .103, 1910.134 and industry best practices



Scaffolding Awareness

Seat Time: 15 min

Who: All workers in construction.

Learning Objectives:

Scaffolding Awareness outlines the basic information and hazards associated with scaffolding. It identifies the various different reasons that a fall from scaffolds occurs.

Additional topics cover the role of the competent person, what unsafe structures look like, and how to identify when their own safety is at risk on raised platforms. The learner will explore different control methods for falling objects, electrical systems, and collapse hazards.

OSHA Standard: 1926.95, .451, .454, .503, Subpart L and industry best practices



Struck By Awareness

Seat Time: 15 min

Who: All workers in construction.

Learning Objectives:

Struck By Awareness details the basic information and hazards associated with flying, falling, swinging, and rolling hazards.

Topics include paying attention and being safe around coworkers, tools, equipment, and heavy machinery while on the jobsite.

An interactive simulation is included where the learner will be tasked to locate and identify common struck-by hazards on a virtual construction site.

OSHA Standard: 1926.95, .201, .451, .601-.604, .651, .1424, & Subparts E, G, H, I, T, O, CC and industry best practices



Welding and Hotwork Part #1

Seat Time: 20 min

Who: All workers in construction performing welding operations.

Learning Objectives:

Welding and Hotwork Part 1 covers the common body hazards and controls related to welding, cutting, and grinding.

Additional topics discussed include identification and controls for gas and fume exposure, electric shock, and the use of proper PPE to protect against eye, face, and body hazards.

An interactive simulation trains workers to identify and correct potentially hazardous welding operations commonly found in the workplace.

OSHA Standard: 1926.350, Subpart J and Industry Best Practices.



Welding and Hotwork Part #2

Seat Time: 20 min

Who: All workers in construction performing welding operations.

Learning Objectives:

Welding and Hotwork Part 2 outlines additional hazards and other employee protection methods related to welding and grinding in the workplace.

Additional topics include gas cylinder safety, hot work fire precautions and prohibited areas, fire suppression equipment, fire watch responsibilities, and hot work permit requirements.

OSHA Standard: 1926.350, Subpart J and Industry Best Practices.



Trenching and Excavation Awareness

Seat Time: 20 min

Who: All workers in construction.

Learning Objectives:

Trenching and Excavation Awareness explains the basics for trenching and excavation hazards on the jobsite.

Learners will discover the different protective devices required to maintain safety, and how to protect themselves in and around trenching and excavation areas.

Additional topics include the ability to identify different types of trenching hazards, how to control these hazards, and the role of the competent person in relation to trench safety.

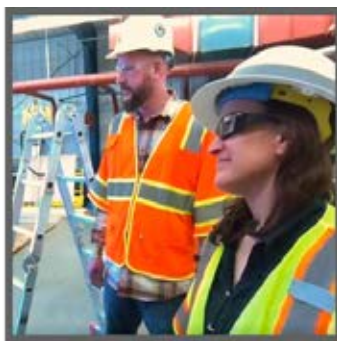
OSHA Standard: 1926.650, .651 & industry best practices

Course Catalog

General Industry

The modules outlined in this catalog are conveniently developed to support blended learning styles. The learning objectives for each course follows the compliance-based OSHA 10 General Industry safety training topics.

Each topic includes an eLearning lesson paired with an interactive simulation or animation experience. Look inside for more details and a comprehensive library of safety training topics specifically designed to educate, engage, and empower today's learners.



General Industry - Course Listing

Bloodborne Pathogens Exposure Control #1	Page 12
Bloodborne Pathogens Exposure Control #2	Page 12
Bloodborne Pathogens Exposure Control #3	Page 12
Bloodborne Pathogens Universal Precautions	Page 12
Electrical Equipment Inspection	Page 13
Emergency Action Planning, Medical Services, & First Aid	Page 13
Emergency Planning Exits & Egress	Page 13
Fire Extinguisher Inspection	Page 13
Fire Extinguisher Use	Page 14
Fire Prevention Awareness	Page 14
Fire Protection Awareness	Page 14
Forklift General Safety	Page 14
Forklift Operator Awareness #1	Page 15
Forklift Operator Awareness #2	Page 15
Forklift: Key Off Inspection	Page 15
Forklift: Key On Inspection	Page 15
Hazardous Communication	Page 16
Ladder Inspection	Page 16
Ladder Use	Page 16
Lockout/Tagout (LOTO)	Page 16
Machine Guarding	Page 17
Occupational Noise Hearing Conservation	Page 17
PPE - Awareness	Page 17
PPE - Body, Hands, Feet	Page 17
PPE - Eyes, Face, Head	Page 18
PPE Respiratory Protection	Page 18
Welding and Hotwork Part #1	Page 18
Welding and Hotwork Part #2	Page 18

Courses



Bloodborne Pathogens Exposure Control #1

Seat Time: 15 min

Who: All workers, All industries.

Learning Objectives:

Part 1 of BBP Exposure Control defines and covers the basics of what BBP are, the different types of BBP, where they are found, and where they are not commonly found unless blood is visible.

Additional topics include how BBP can be transferred from one person to the next through direct or indirect contact in the workplace, and the purpose of a BBP Exposure Control Plan.

OSHA Standard: 1910.1030 and industry best practices



Bloodborne Pathogens Exposure Control #2

Seat Time: 15 min

Who: All workers, All industries.

Learning Objectives:

Part 2 of BBP Exposure Control trains on industry best practices to prevent the spread of BBP in the workplace. An emphasis is placed on treating all body fluids as potentially infectious material.

Additional topics include understanding the different types of personal protective equipment that help protect against exposure to BBP, and the proper way to don, doff, and dispose of contaminated gloves.

OSHA Standard: 1910.1030 and industry best practices



Bloodborne Pathogens Exposure Control #3

Seat Time: 15 min

Who: All workers, All industries.

Learning Objectives:

Part 3 of BBP Exposure Control defines what an exposure or contact with potentially infectious material is, and what immediate action to take upon exposure.

Additional topics include Hepatitis B vaccination information, proper reporting methods, and employee rights to seek medical treatment.

OSHA Standard: 1910.1030 and industry best practices



Bloodborne Pathogens Universal Precautions

Seat Time: 15 min

Who: All workers, All industries.

Learning Objectives:

Universal Precautions training covers general safety awareness and best practices for employees to follow if they should come into BBP in the workplace.

Additional topics include understanding the different types of BBP, and unless it's part of a job responsibility, remember to not touch anybody else's bodily fluid.

OSHA Standard: 1910.1030 and industry best practices



Electrical Equipment Inspection

Seat Time: 15 min

Who: All workers that perform work in buildings.

Learning Objectives:

Electrical equipment inspection covers the basics of visual inspection for portable equipment. This training explains how to inspect handheld and portable tools for different types of cord and plug electrical hazards.

Additional topics include how to properly inspect and look for electrocution hazards with double insulated tools, two prong and three prong plugs, and extension cords.

OSHA Standard: 1910.334 and industry best practices



Emergency Action Plan Medical & First Aid

Seat Time: 15 min

Who: All workers, All industries.

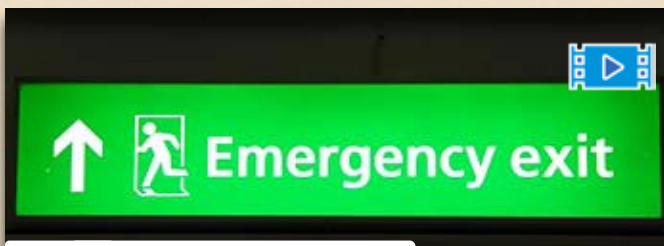
Learning Objectives:

Emergency Action Plan (EAP) Medical and First Aid explains the different types of emergency situations and hazards that are reasonably expected in the workplace.

Additional topics include the expectations, requirements, and procedures that make up the documented EAP to ensure the safety of employees if a potential emergency occurs.

An interactive simulation prepares learners on how to respond to a few common emergencies by utilizing their knowledge of common EAP procedures in a virtual construction environment.

OSHA Standard: 1910.38 and industry best practices



Emergency Planning Exits and Egress

Seat Time: 15 min

Who: All workers that perform work in buildings.

Learning Objectives:

This module teaches about the importance of maintaining emergency exits and knowing safety features in buildings that allow all workers to find a path of travel to an exit without confusion.

Additional topics include the three sections of an exit route, understanding exits and egress signage, and what to look for to ensure exit routes are always free from obstruction during normal operations.

An interactive experience guides the learner through a simulated fire emergency where they must carefully observe their surroundings, identify hazards, and follow an evacuation plan to find the nearest safe exit.

OSHA Standard: 1910.35, .36, .37 (Subpart E) and industry best practices



Fire Extinguisher Inspection

Seat Time: 15 min

Who: All workers, All industries.

Learning Objectives:

Fire Extinguisher Inspection covers step-by-step inspection methods, record keeping requirements, testing frequency, and proper storage.

An interactive simulation trains learners to thoroughly inspect each part of an extinguisher to ensure its safe and proper usage.

OSHA Standard: 1910.157 and industry best practices



Fire Extinguisher Use

Seat Time: 15 min

Who: All workers, All industries.

Learning Objectives:

Fire Extinguisher Use helps learners to know which types of fires can be fought with a portable extinguisher, the factors that determine when to fight a fire, evacuate immediately, or follow up by calling 911.

Additional topics include what to do if an employee is not comfortable fighting a fire, when to initiate the emergency evacuation procedure, and how to properly use a fire extinguisher using the P.A.S.S. method.

An interactive simulation tasks the learner with responding to fire emergency scenarios with differing levels of severity to evaluate and determine whether or not to use a fire extinguisher, evacuate, or call emergency services.

OSHA Standard: 1910.157 and industry best practices



Fire Prevention Awareness

Seat Time: 15 min

Who: All workers, All industries.

Learning Objectives:

Fire Prevention Awareness explains the different components of the written fire prevention plan, how to identify flammable and combustible chemicals, and potential ignition sources.

An interactive simulation allows the learner to practice scene assessment, interacting with pictograms, inspecting drum labels, and possible ignition sources.

OSHA Standard: 1910.39 and industry best practices



Fire Protection Awareness

Seat Time: 20 min

Who: All workers, All industries.

Learning Objectives:

Fire Protection Awareness explains the fire triangle and its components, different fire extinguishers and their uses, inspection requirements, and the steps to follow when using an extinguisher.

An interactive simulation prepares learners to determine when to evacuate, or fight a fire based on its conditions, how to properly use a fire extinguisher using the P.A.S.S. method.

OSHA Standard: 1910.155, Subpart L, and industry best practices



Forklift General Safety

Seat Time: 15 min

Who: All workers, All industries where forklifts are used.

Learning Objectives:

This module covers general safety topics, and an overview of common hazards associated with forklifts in the workplace. Best practices are discussed regarding safe operations while turning, driving on slick surfaces, proper stopping distance requirements, and the use of backup alarm systems.

Additional topics covered include pedestrian awareness, parking, and the difference between attended versus unattended operations.

OSHA Standard: 1910.178 and industry best practices



Forklift Operator Awareness #1

Seat Time: 15 min

Who: All workers, All industries where forklifts are used.

Learning Objectives:

Part 1 of Forklift Operator Awareness training covers basic knowledge about the different types of forklifts, associated hazards, and control mechanisms found on various lifts.

Additional topics include driver awareness tips, safe driving practices, and unique features that make forklifts different than other types of vehicles.

OSHA Standard: 1910.178 and industry best practices



Forklift Operator Awareness #2

Seat Time: 15 min

Who: All workers, All industries where forklifts are used.

Learning Objectives:

Part 2 of Forklift Operator Awareness training illustrates the Forklift of Center of Gravity, best practices for driving on inclines, how to properly stop, and park a forklift.

Additional topics include tip over hazards and how to avoid injury should one occur, and the difference between working away from a forklift vs. leaving one unattended.

OSHA Standard: 1910.178 & Appendix A, and industry best practices



Forklift: Key Off Inspection

Seat Time: 15 min

Who: All workers, All industries where forklifts are used.

Learning Objectives:

The Key Off Inspection is the first of two parts to the pre-operation forklift inspection. This module explains general inspections as well as requirements for electric, internal combustion, and liquid propane forklifts.

Additional topics cover the importance and frequency of the pre-operation inspection, and what to do if the forklift does not pass inspection.

OSHA Standard: 1910.178 and industry best practices



Forklift: Key On Inspection

Seat Time: 15 min

Who: All workers, All industries where forklifts are used.

Learning Objectives:

The Key On Inspection is the second of two parts to the pre-operation forklift inspection. This module explains the importance and frequency of the pre-operation inspection, and the steps necessary to remove a forklift from service.

Additional topics cover inspection items that must be checked as legible, and the verification and proper working order of all lights, the dashboard panel, safety devices, forks, and mast movement.

OSHA Standard: 1910.178 and industry best practices



Hazardous Communication

Seat Time: 25 min

Who: All workers, All industries.

Learning Objectives:

Hazardous Communication Awareness trains learners about the importance of the global standard, the 16 sections of a Safety Data Sheet, and the meaning behind each of the 9 Pictograms.

Additional topics include information about signal words and precautionary statements, container labeling requirements, and an overview about additional labeling guidelines that are not hazard communication compliant yet are commonly found in the workplace.

An interactive simulation provides learners the opportunity to observe different types of chemical labels, interpret parts of Safety Data Sheets, and evaluate how best to respond to a spill.

OSHA Standard: 1910.1200 and industry best practices



Ladder Inspection

Seat Time: 20 min

Who: All workers, All industries.

Learning Objectives:

Ladder Inspection training focuses on the basics of ladder use and the different categories and types of ladders. The importance of inspections prior to use, and what to look for during an inspection are explained in detail. The training includes different types of portable ladders found at work.

An interactive simulation trains the learner to perform an inspection of an A-Frame ladder and identify potential safety hazards on various ladder components before use.

OSHA Standard: 1910.23, 1910.30 & industry best practices



Ladder Use

Seat Time: 15 min

Who: All workers, All industries.

Learning Objectives:

Ladder Use training focuses on identifying the proper ladder to use for the job, proper setup, and placement for A-Frame and extension ladders.

Additional topics covered include safety around electricity, climbing or descending ladders properly, and key personal safety tips when working on ladders.

An interactive simulation trains the learner to identify potential safety hazards related to ladder use and setup in a virtual warehouse environment.

OSHA Standard: 1910.22, .23, Subpart D, and industry best practices



Lockout/Tagout (LOTO)

Seat Time: 20 min

Who: All workers, All industries.

Learning Objectives:

The Control of Hazardous Energy illustrates the three roles of the Lockout Tagout (LOTO) program, reviews different safety devices, and clearly outlines the correct LOTO and release from LOTO process steps.

An interactive simulation is included to help learners identify different energy sources and which lockout device to apply prior to maintenance.

OSHA Standard: 1910.147 and industry best practices



Machine Guarding

Seat Time: 20 min

Who: All workers, All industries.

Learning Objectives:

This module explains the basic knowledge of machine guarding hazards found on construction sites. This includes hand tools, power tools, saws, point-of-operation hazards, in-running nip points, belts, shafts, pulleys, and gears.

Learners will discover how to identify these hazards and how to protect themselves from becoming an injury statistic.

An interactive simulation is included to guide learners through a virtual workshop environment allowing them to inspect various types of machinery searching for missing machine guards.

OSHA Standard: 1910.212 & industry best practices



Occupational Noise Hearing Conservation

Seat Time: 15 min

Who: All employees exposed to noise levels at 85 decibels or greater in general industry.

Learning Objectives:

Hearing Conservation teaches about occupational noise, hearing loss, the importance of a Hearing Conservation Program, and how to properly insert foam earplugs.

Additional topics include the effects of hearing loss and ways to determine what level of hearing protection may be required based on the work environment.

An interactive simulation trains learners how to make decisions based on sound meter readings and assess the impact of noise exposure on the job.

OSHA Standard: 1910.95 and industry best practices



PPE - Awareness

Seat Time: 20 min

Who: All workers, All industries.

Learning Objectives:

PPE Awareness teaches about the Hierarchy of Controls, an overview of different types of PPE, and how to determine which types of PPE are required based on the work area and work being performed.

Additional topics include identifying the proper respirator to protect against airborne hazards, hearing protection requirements, and the importance of proper fit, inspection, and care of all PPE.

An interactive simulation guides the learner through a workshop environment to evaluate the PPE of workers operating woodworking equipment/power tools and distribute the proper PPE.

OSHA Standard: 1910.132 and industry best practices



PPE - Body, Hands, Feet

Seat Time: 20 min

Who: All workers, All industries.

Learning Objectives:

This module trains how to choose the right body, hands, and feet protection to help prevent injuries in the workplace. Learners explore various use cases for each type of PPE, when to select one type over another, and the importance of proper inspection before use.

Additional topics include which PPE to use to prevent and deal with thermal and chemical burns, vibration hazards, and temperature extremes.

An interactive simulation tasks the learner with touring an industrial machine shop environment to identify hazards, evaluate the use of PPE in the scene, and distribute the proper PPE to workers.

OSHA Standard: 1910.132, .120, .136, Subpart I and industry best practices



PPE - Eyes, Face, Head

Seat Time: 15 min

Who: All workers, All industries.

Learning Objectives:

This module trains how to choose the right eye, face, and head protection to help prevent injuries in the workplace. Learners explore various use cases for each type of PPE when to select one type over another, and the importance of proper inspection before use.

Additional topics include various types of protection control methods to include impact ratings for eye protection, different types of face shield protection, and hard hat classifications.

An interactive simulation is included to demonstrate the importance of eye and face protection when operating equipment in a virtual machine shop.

OSHA Standard: 1910.132, .120, .136, Subpart I and industry best practices



PPE Respiratory Protection

Seat Time: 20 min

Who: All workers, All industries.

Learning Objectives:

PPE Respiratory Protection training covers the requirements for a Respiratory Protection Program, discusses the two general types of respirators, and proper selection of respirators based on the work area and work being performed.

Additional topics include fit testing, understanding the different types of filters, and proper inspection and storage for each type of respirator commonly found in the workplace.

OSHA Standard: 1910.134 and industry best practices.



Welding and Hotwork Part #1

Seat Time: 20 min

Who: All workers, All industries.

Learning Objectives:

Welding and Hotwork Part 1 covers the common body hazards and controls related to welding, cutting, and grinding.

Additional topics discussed include identification and controls for gas and fume exposure, electric shock, and the use of proper PPE to protect against eye, face, and body hazards.

An interactive simulation trains workers to identify and correct potentially hazardous welding operations commonly found in the workplace.

OSHA Standard: 1926.350, Subpart J and Industry Best Practices.



Welding and Hotwork Part #2

Seat Time: 20 min

Who: All workers, All industries.

Learning Objectives:

Welding and Hotwork Part 2 outlines additional hazards and other employee protection methods related to welding and grinding in the workplace.

Additional topics include gas cylinder safety, hot work fire precautions and prohibited areas, fire suppression equipment, fire watch responsibilities, and hot work permit requirements.

OSHA Standard: 1926.350, Subpart J and Industry Best Practices.